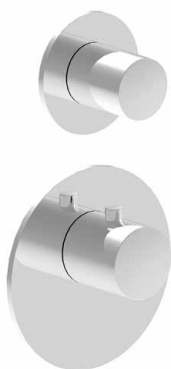


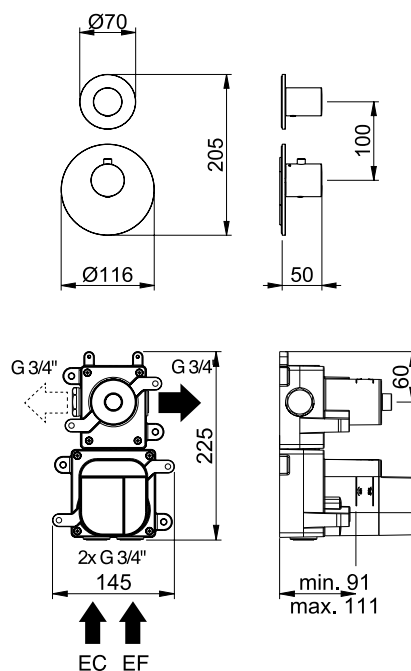
Réf. **47.521**

Réf. **81.591**

Box mitigeur thermostatique encastré 1 voie + habillage pour box mitigeur thermostatique



MONTAGE HORIZONTAL ET VERTICAL
HORIZONTAL OR VERTICAL ASSEMBLY



CARACTÉRISTIQUES Réf. 47.521

Habillage pour box mitigeur thermostatique.
Trim for thermostatic mixer.


CARACTÉRISTIQUES Réf. 81.591

Box mitigeur thermostatique encastré 1 voie.
Insert box for thermostatic mixer with 1 outlet.








16 ACC LY 190

FINITIONS USUELLES

-  **CH** Chrome
Chrome
-  **NM** Nickel Mat
Brushed Nickel

FINITIONS SPÉCIALES

FINITIONS DÉCORATIONS

-  **CT** Cuivre Satiné
Copper Satin
-  **LS** Laiton Satiné
Soft Brass
-  **CF** Canon de Fusil
Metal Gun
-  **NS** Nickel Satiné
Nickel Satin
-  **NO** Noir Mat
Black

FINITIONS PVD

-  **CP** Champagne
Champagne
-  **CR** Pink
Pink
-  **NN** Glossy Black
Glossy Black

